

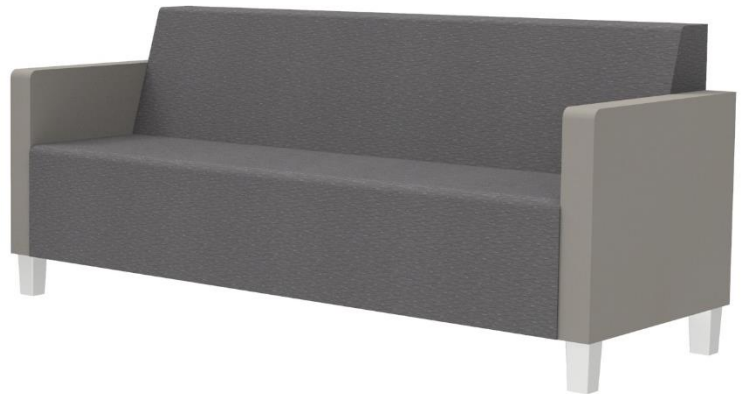
CARSON

Lounge Seating



CARSON

Lounge Seating



	Chair	Bariatric Chair	2- seater couch	3- seater couch
Depth			28"	
Seat Depth			18"	
Width	29.5"	39.5"	52.5"	75.5"
Seat Width	23"	33"		23"
Height		33"		35"
Seat Height			18"	
Weight Capacity	500 lbs	750 lbs	750 lbs	1000 lbs

The Carson lounge seating collection offers a clean, rectilinear profile that conceals a structural steel framework and ensures a high level of durability.

Features

- Limited lifetime warranty
- 14-Gauge steel framework
- Concealed clean-out space between seat and back
- Nylon glides
- No visible fasteners

Options

- Choice of wood, rigid polyester, polyurethane, or solid surface arm caps
- Wood or powder-coated steel leg
- Custom leg and arm cap finishes
- Contrasting fabrics
- Moisture barrier



Contact Us:

Email: Info@statmedicalcanada.com

Phone: 1-866-783-4076