

# FRONTIER

PATIENT ROOM FURNITURE



# FRONTIER BH FURNITURE

## Features

- Stain resistant, seamless, and easy to clean
- Rounded corners prevent injury
- Bed features surface grooves for fluid management
- Flip-style bedside cabinet allows two configurations
- Craftsman style appearance

## Options

- Bed and chair can be bolted to the floor
- Patient restraint system
- Bedside cabinet, desk, and shelves can be bolted to the wall



		Depth	Width	Height	Weight Capacity
FRBD3681	Bed	42"	86.75"	24"	750 lbs
FR101	Bedside Cabinet	20"	20.25"	26"	
FRCG500	Desk	23"	26.25"	29"	
FRCG702	Two Shelf Wall Unit	14"	29"	22"	
FRCG703	Three Shelf Wall unit	14"	29"	51"	
FRC121A	Armless Chair	25.5"	22"	33"	

## Statement of Line



FRBD3681



FR101



FRCG500



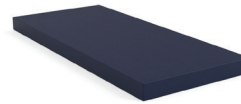
FRCG702



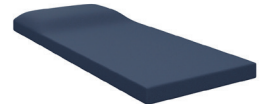
FRCG703



FRC121A



SF36805



SF36805-PW

