

FLO

PATIENT ROOM FURNITURE



FLO BH FURNITURE

Features

- Stain resistant, seamless, and easy to clean
- Rounded corners prevent injury
- Laminate top surfaces on tables
- Pick resistant polyurethane no-drip edge
- Tamper-resistant hardware
- One-piece construction for beds and cabinets

Options

- Enclosed bottom
- Bolt-to-floor brackets
- Patient restraint modules for beds
- Non removable nylon glides for chairs and tables

| | | Depth | Width | Seat Width | Height | Seat Height | Weight Capacity |
|------------|--------------------------|-------|--------|------------|--------|-------------|-----------------|
| FLBD3680 | Bed | 83.5" | 39.5" | - | 20" | 18" | - |
| FLBDS3680 | Bed, Side Storage | 83.5" | 39.5" | - | 20" | 18" | - |
| FL100 | Bedside Cabinet | 18" | 20" | - | 23.4" | - | - |
| FRCG702 | Two-Shelf Wall Unit | 14" | 29" | - | 22" | - | - |
| FRCG703 | Three-Shelf Wall Unit | 14" | 29" | - | 51" | - | - |
| FLC121A | Dining Chair | 27.5" | 23.75" | 23.75" | 34.5" | 19" | 2000 lbs |
| FLC121A-U | Upholstered Dining Chair | 27.5" | 23.75" | 23.75" | 34.5" | 19" | 2000 lbs |
| FLTR42-U | Round 42" Table | 42" | 42" | - | 29.25" | - | - |
| FLTR48-U | Round 48" Table | 48" | 48" | - | 29.25" | - | - |
| SF36805 | 5" Mattress | 36" | 80" | - | 5" | - | - |
| SF36805-PW | 5" Mattress, Pillow | 36" | 80" | - | 5" | - | - |

Statement of Line



FLBD3680



FLBDS3680



FL100



FRCG702



FRCG703



FLC121A



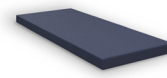
FLC121A-U



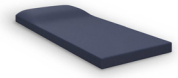
FLTR42-U



FLTR48-U



SF36805



SF36805-PW

